

CERTIFICATE OF LOCATION OF GOVERNMENT CORNER

EAST QUARTER Corner of Section 21, Township 106, Range 39, 5TH P.M.

STATE OF MINNESOTA, County of MURRAY

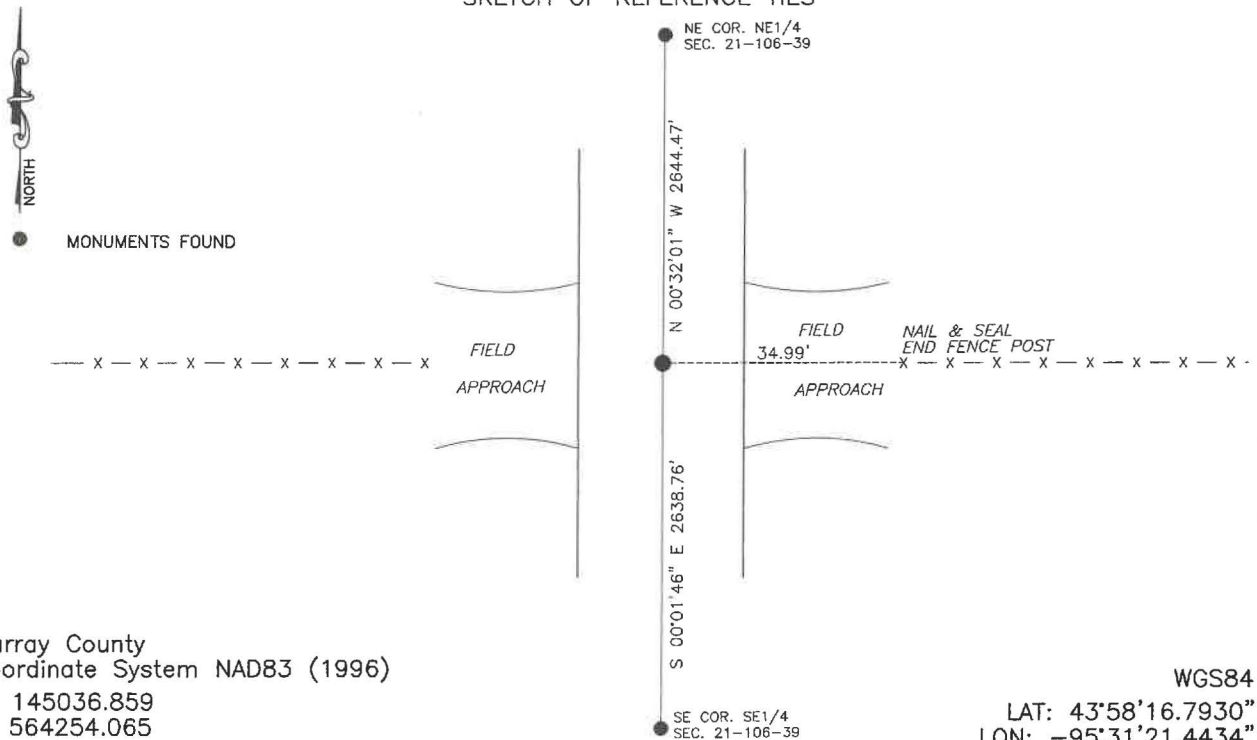
At the corner location shown on the sketch:

☒ On 8/12/2024 found a Large pointed field stone with a 2" iron pipe
DATE
along the south side of the stone 12" down.

☒ left monument as found, ☐ lowered monument, ☐ removed monument (explain)

☐ On _____ placed a _____
DATE

SKETCH OF REFERENCE TIES



Statement of evidence relative to this corner location is on back of page.

I hereby certify that this document and the data contained herein was prepared by me or under my direct supervision.

Daniel L. Buettel
License No. 43844

3/13/2025
DATE

MAR 13 2025

Karen Brown
MURRAY COUNTY RECORDER

Statement of Evidence

EAST QUARTER CORNER SECTION 21, T106N, R39W OF THE 5th P.M.

In September 1858 W.J. Neely surveyed the east township line.

In July of 1861 J.W. Myers surveyed the north, south, and west township lines.

In August of 1861 Wellman & Smoot subdivided the township.

On August 12, 2024 Bueltel-Moseng Land Surveying dug with a backhoe and found a large pointed field stone with a 2" pipe along the south side of the stone.